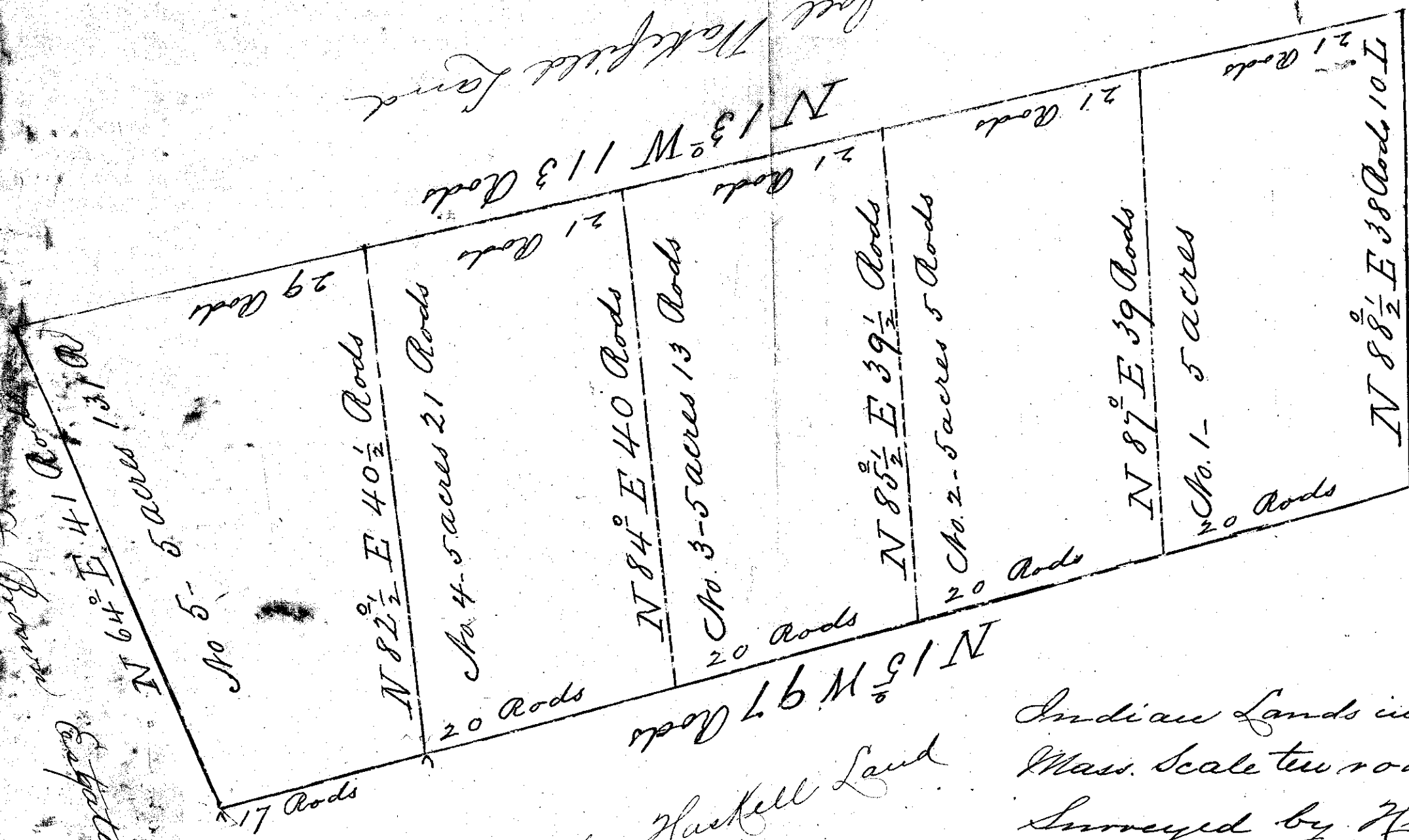


1548  
653

Formerly part of the  
Haskell Land



Walter Johnson Land

Christopher Haskell Land

Indian Lands in Webster  
Mass. Scale ten rods to one inch  
Surveyed by Hiram Allen  
Sold November 22<sup>nd</sup> 1884 by  
Chas. E. Stevens and  
Thomas Harrington Commissioners

Filed Dec 24, 1857, at 9:30 a.m. and attached to the Record  
By Murray B. Wilder Reg.

